

FULLY AUTOMATIC SHIRTS FINISHER - approx. 50 pcs/h

MOD SR 3000

The true alternative for quality and productivity in the ironing finishing of men's and women's shirts.

Features and strengths

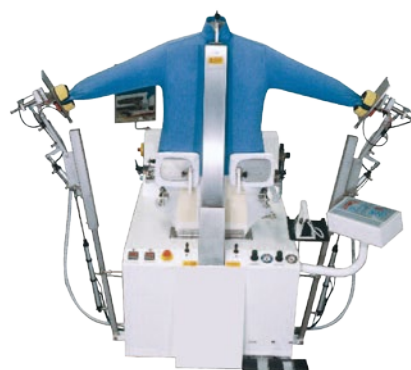
SR-3000/V - Steam operated. To be connected to centralised steam plant. Suitable for ironing wet and dry shirts.

Steam consumption: 25 - 30 kg/h

SR-3000/E - Electric operation for wet shirts.

Consumption of electricity 24 kW

- Stainless steel heated form, vacuum, blowing and steaming (only SR-3000/V)
- Automatic vacuum in the body for easy positioning of the shirt
- Digital computer for control of all the phases of preparation and ironing functions - 9 programs - with piece metre, user friendly software
- Pneumatic collar blocking
- Pneumatic opening of shoulders, based on size
- Automatic tensioning of shirt sides
- Front paddle electronically heated for ironing of front placket, with electronic thermostat
- Front and back pneumatic paddles to block shirt bottom, with photocell
- Steam superheater with electronic thermostat up to 200°C
- Automatic sleeve tensioning
- Blowing motor at 2,2 kW - 3 hp, separate vacuum motor at 0,55 kW - 0,75 hp
- Blowing quantity adjustable electronically
- EC-2002 iron with stainless steel plate for ironing shirt pockets
- Productivity - approximately 50 pcs/h

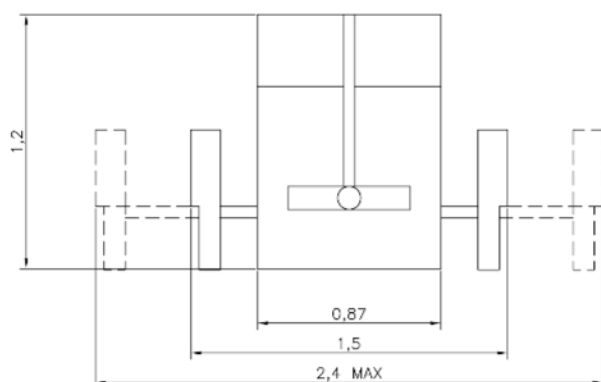


Options

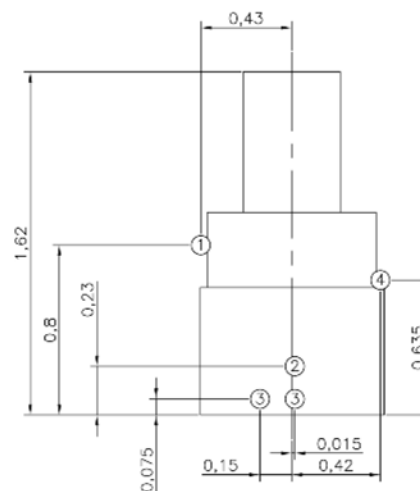
- JOY - Joystick for automatic positioning of short-sleeve and long-sleeve clamps
- Automatic discharge device from the shoulders or from the hanger

TYPE		MOD SR 3000 V	MOD SR 3000 E
ELECTRIC CONNECTIONS			
Standard voltage 400 V / 3 Ph / 50 Hz	kW	6	25
Other voltages available on request			
Vacuum motor power	kW	2	2
Super heating device	kW		
STEAM AND AIR CONNECTIONS			
Steam inlet	inch	1/2"	
Steam outlet	inch	1/2"	
Steam supply	kPa	400 - 600	
Steam consumption	kg/h	35 - 40	
Compressed air inlet	inch	1/4"	1/4"
Compressed air supply	kPa	600 - 800	600 - 800
SHIPPING DETAILS			
Packing type		Pallet + carton box	Pallet + carton box
Shipping dimensions		1800 x 1500 x 2000	1800 x 1500 x 2000
Net weight	kg	250	250
Gross weight	kg	300	300

TOP VIEW



REAR VIEW



4	ELECTRIC POWER	--
3	CONDENSATION RETURN	1/2" F
2	STEAM	1/2" F
1	AIR INLET	Ø 8 mm